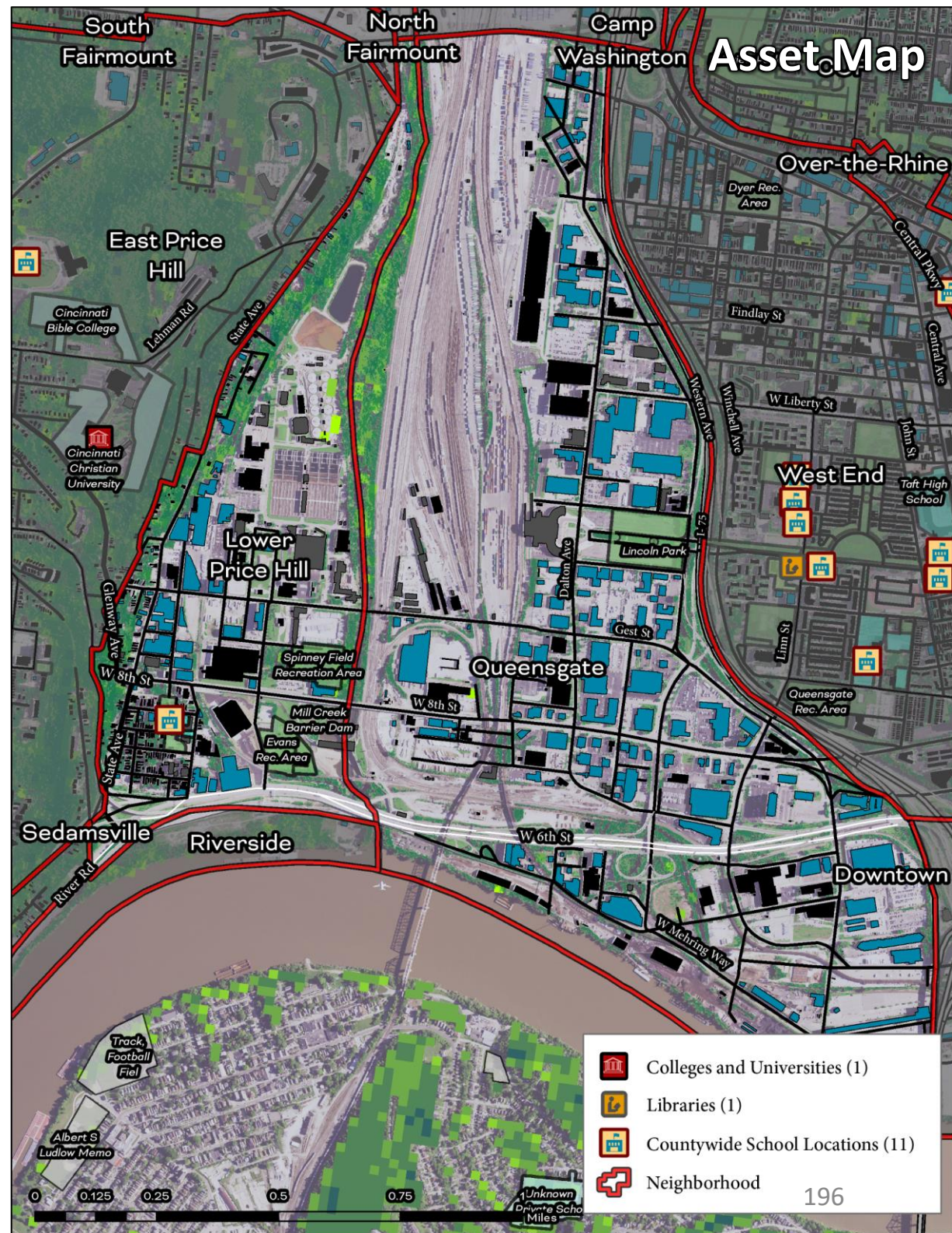


Lower Price Hill & Queensgate

Cincinnati Neighborhood Profile

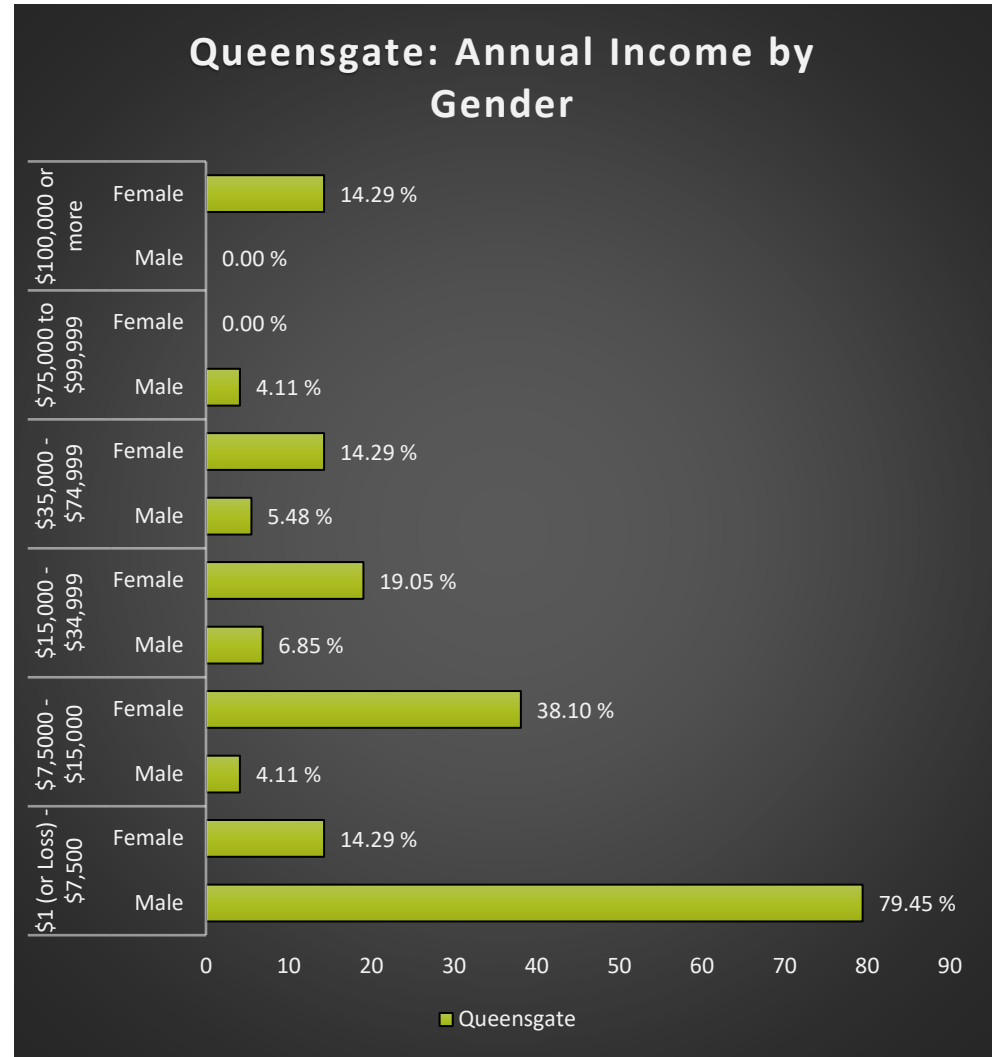
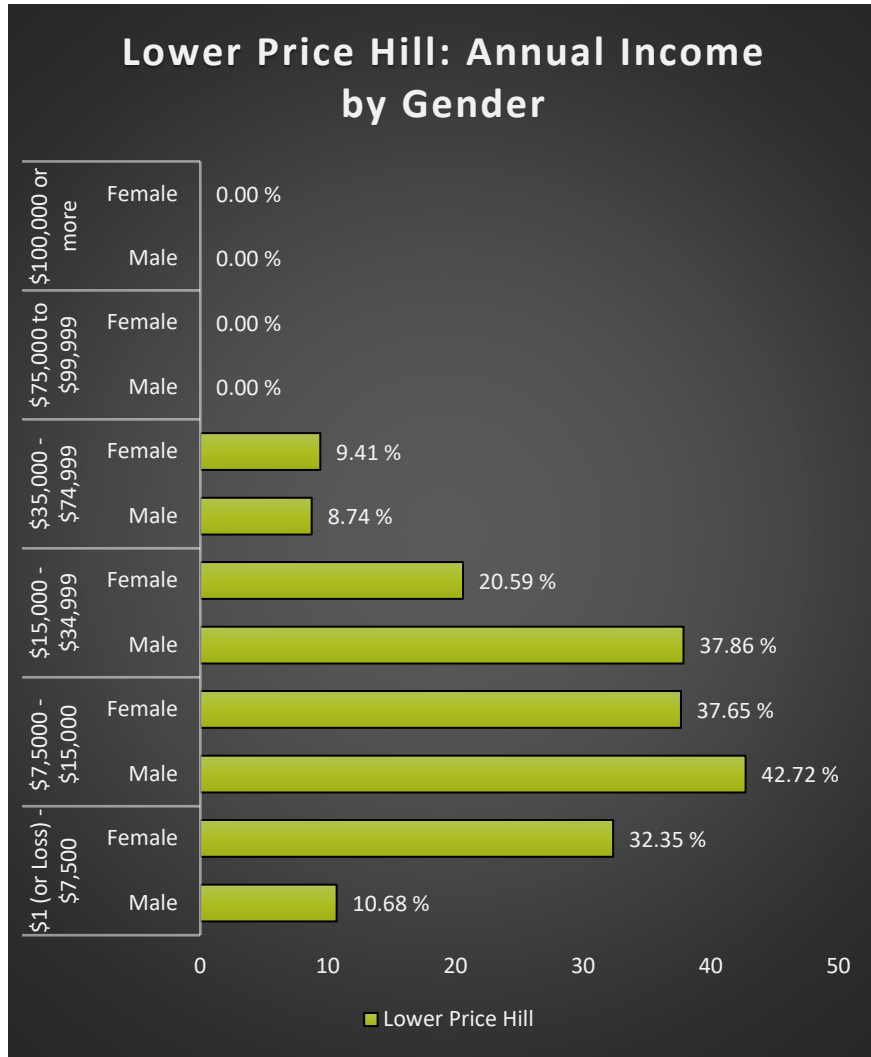
Lower Price Hill is a mixed race neighborhood (35.3% Black, 43.4% white, 21.3% Other, and 2.1% Hispanic) with 1,082 residents, 40% of which are 17 and under. It has an active community council (Lower Price Hill Community Council), a community development corporation (Price Hill Will), and several community plans (Lower Price Hill Resurgency Plan (2019), Price Hill Plan (2015), I-75 Corridor - Revive Cincinnati Plan, and the Lower Mill Creek Valley Plan). The average life expectancy for the neighborhood is 62.9 (ranked 48th for all neighborhoods assessed). LPH/Queensgate has an “extreme” prevalence of asthma (16.3%), obesity (51.1%), and heart disease (10.6%) relative to all communities assessed.

The neighborhood has ~6% tree canopy cover (ranked 43rd of all communities assessed). It has “excellent” access to public transit but a large influx of the daytime population vs residents (ranked 48th of all communities assessed). It has “extreme” exposure to traffic, cancer and respiratory disease risks due to air pollution, and is in close proximity to water pollution sources. Around 72.1% of Lower Price Hill residents are living in poverty (ranked 47th of all communities assessed) and 48.3% of households are SNAP recipients. In addition, 38.3% of residents are renters spending more than 50% of income on rent and utilities.



Lower Price Hill & Queensgate

Cincinnati Neighborhood Profile



Lower Price Hill & Queensgate Notable Indicators

Average Life Expectancy	% of Tree Canopy Cover	% of Residents Living in Poverty
62.9 (ranked 48th for all communities assessed)	6% (ranked 43rd for all communities assessed)	72.1% (ranked 47th for all communities assessed)

Lower Price Hill & Queensgate

Cincinnati Neighborhood Profile

People			
Indicator	Rank	%	# of Persons
Population	-	-	1,082
Persons over 65	15	9.5%	103
Persons 17 and Under	45	40.1%	434
Children Living w/ Grandparents	22	1.1%	12
Race/Ethnicity:			
Black	-	35.3%	382
white	-	43.4%	470
Asian	-	0.0%	-
Other	-	21.3%	230
Latinx	-	2.1%	23
Persons 5 and Older in Households w/ Limited English Ability	8	0.0%	-

Health			
Indicator	Rank	Value	
Life Expectancy	48	62.9 years	-
Disease Prevalence Estimates:	Rank of % w/Condition	% with Condition	Persons with Condition
Asthma	47	16.3%	177
Cancer	7	4.3%	46
Diabetes	33	17.8%	192
Heart Disease	41	10.6%	114
High Blood Pressure	30	37.8%	409
Kidney Disease	37	4.2%	45
Obesity	45	51.1%	553
Lack of Health Insurance	48	26.0%	281
Persons w/ Independent Living Difficulty	39	4.3%	46
Persons Living w/ Disability	35	16.9%	183

Ecosystems and Infrastructure		
Indicator	Rank	Value
Lower Price Hill		
Tree Canopy Coverage	43	6.0%
Greenness of Land Surface	42	26.4%
Percent Land in Parks and Greenspaces	38	7.0%
Impervious Surface	43	65%
Heat Island Exposure	41	1.22
Walkability	-	Above Average to Good
Persons w/ Low-Income and Low Food Access	14	7.8%
Transit Accessibility	-	Excellent
Daytime Population vs. Resident Population	48	1027.4%
Commuters Leaving Each Day	-	240
Commuters Using Public Transit	42	21.7%
Queensgate		
Tree Canopy Coverage	45	1.1%
Greenness of Land Surface	48	10.7%
Percent Land in Parks and Greenspaces	50	0.9%
Impervious Surface	46	76%
Heat Island Exposure	47	2.07

Lower Price Hill & Queensgate

Cincinnati Neighborhood Profile

Socio-Economic Indicators			
Indicator	Rank	%	#
Persons Living in Poverty	47	72.1%	780
SNAP Recipient Households	43	48.3%	159
Educational Attainment:			
Less than High School	-	16.8%	-
HS or Equivalent	-	10.3%	-
Some College	-	6.9%	-
Associate's Degree	-	2.5%	-
Bachelor's Degree or Higher	-	1.8%	-
Educational Attainment Index	47	0.15	-
Extreme Housing Burdens:			
Renter-Occupied Housing (as % of All Housing Units)	44	83.9%	276
Renters Spending 30% of Income or More on Rent + Utilities	42	43.2%	142
Renters Spending 50% of Income or More on Rent + Utilities	48	38.3%	126
Homeowners Spending 30% of Income or More on Mortgage + Utilities	20	17.0%	9
Average Energy Costs (as % of Income)	47	8.8%	-
Persons without Vehicle Access	35	11.6%	125

Neighborhood Planning	
Indicator	Description
Community Councils	Lower Price Hill Community Council
Community Development Corporations	Price Hill Will
Community Plans	Lower Price Hill Resurgency Plan (2019); Price Hill Plan (2015); I-75 Corridor - Revive Cincinnati: Lower Mill Creek Valley

Built Environmental Hazards		
Indicator	Relative Exposure Level	Value
Lower Price Hill		
Traffic Exposure	Extreme	-
Potential Lead Paint Exposure (Houses Built pre-1960)	Extreme	0.9453303
Cancer Risk from Air Pollution	Extreme	-
Respiratory Disease Risk from Air Pollution	Extreme	-
Proximity to Water Pollution Sources	Extreme	-
PM2.5 Levels in Air, µg/m3	Moderate	9.71
Ozone Concentration, ppb	Low	46.43
Diesel Particulate in Air, µg/m3	Extreme	1.3613
Proximity to Superfund Sites	Low	-
Proximity to Potentially Toxic Industrial Activity	Very High	-
Proximity to Hazardous Waste Treatment and Disposal Facilities	Moderate	-
Queensgate		
Traffic Exposure	Extreme	-
Potential Lead Paint Exposure (Houses Built pre-1960)	Low	0
Cancer Risk from Air Pollution	Extreme	-
Respiratory Disease Risk from Air Pollution	Extreme	-
Proximity to Water Pollution Sources	Extreme	-
PM2.5 Levels in Air, µg/m3	Moderate	9.71
Ozone Concentration, ppb	Low	46.43
Diesel Particulate in Air, µg/m3	Extreme	1.3613
Proximity to Superfund Sites	Low	-
Proximity to Potentially Toxic Industrial Activity	Extreme	-
Proximity to Hazardous Waste Treatment and Disposal Facilities	Moderate	199